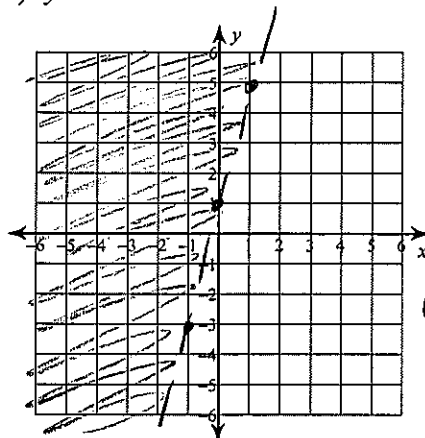


Homework 13.2

© 2014 Kuta Software LLC. All rights reserved.

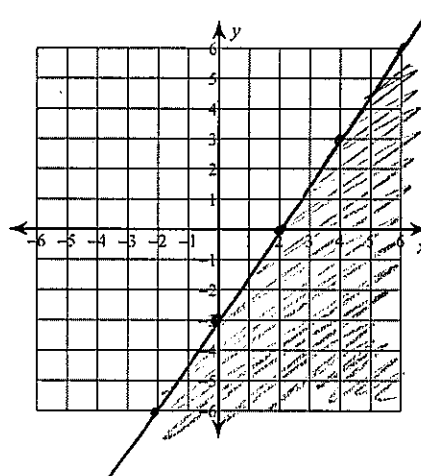
Sketch the graph of each linear inequality.

1) $y > 4x + 1$



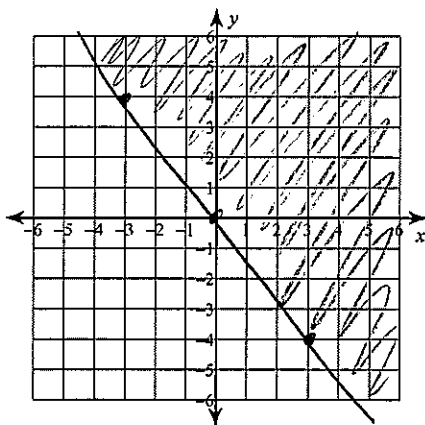
$m = 4$
 $b = 1$
 dashed
 above

2) $y \leq \frac{3}{2}x - 3$



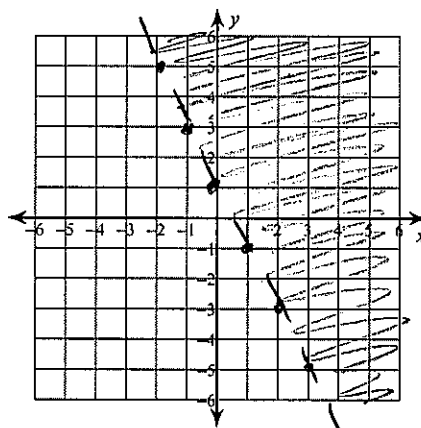
$m = \frac{3}{2}$
 $b = -3$
 solid
 below

3) $y \geq -\frac{4}{3}x$



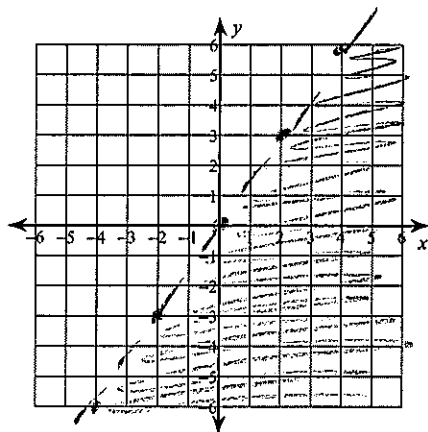
$m = -\frac{4}{3}$
 $b = 0$
 solid
 above

4) $y > -2x + 1$



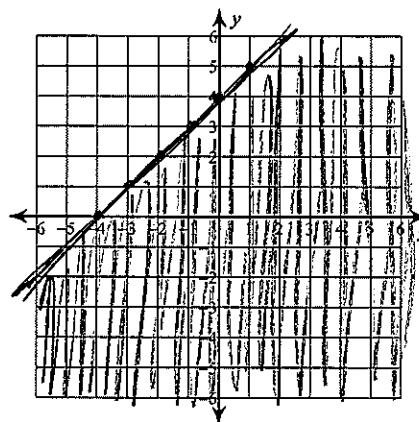
$m = -2$
 $b = 1$
 dashed
 above

$$5) y < \frac{3}{2}x$$



$m = \frac{3}{2}$
 $b = 0$
 dashed
 below

$$6) y \leq x + 4$$



$m = 1$
 $b = 4$
 solid
 below

Write the slope-intercept form of the equation of the line through the given point with the given slope.

$$7) \text{ through: } (3, 0), \text{ slope} = \frac{4}{3}$$

$$y - y_1 = m(x - x_1)$$

$$y - 0 = \frac{4}{3}(x - 3)$$

$$3(y - 0) = 4(x - 3)$$

$$\frac{3y}{3} = \frac{4x}{3} - \frac{12}{3}$$

$$y = \frac{4}{3}x - 4$$

$$8) \text{ through: } (2, 2), \text{ slope} = 3$$

$$y - y_1 = m(x - x_1)$$

$$y - 2 = 3(x - 2)$$

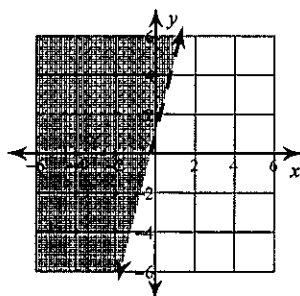
$$y - 2 = 3x - 6$$

$$+2 \quad +2$$

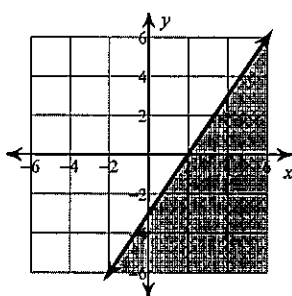
$$y = 3x - 4$$

Answers to Homework 13.2 (ID: 1)

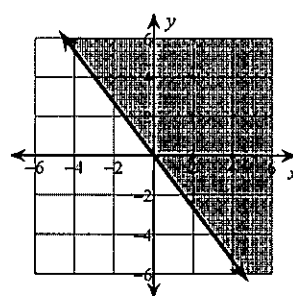
1)



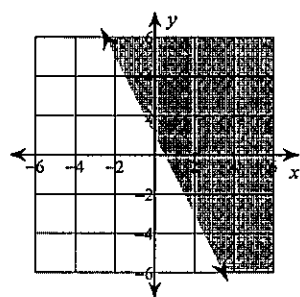
2)



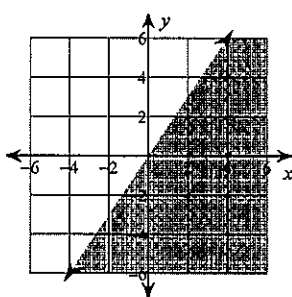
3)



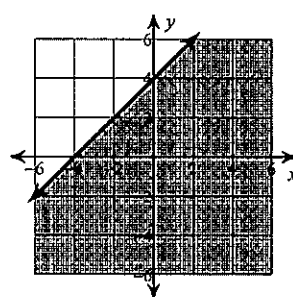
4)



5)



6)



7) $y = \frac{4}{3}x - 4$

8) $y = 3x - 4$